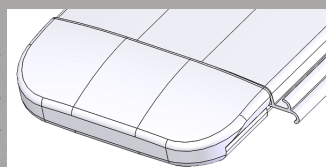


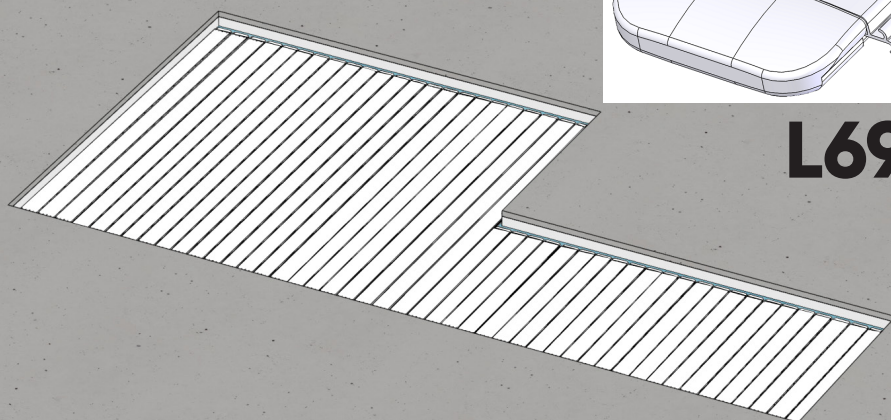
EN

INSTALLATION INSTRUCTIONS

INSTALLATION/CARE/MAINTENANCE/SAFETY INSTRUCTIONS



L69



DEL 

SLATTED COVER

69 MM OPAQUE PVC SLATS AND SOLAR POLYCARBONATE SLATS

CONTENTS

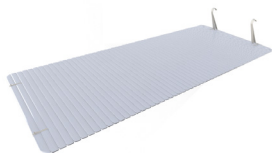
READ THESE INSTRUCTIONS CAREFULLY AND KEEP THEM FOR FUTURE REFERENCE

Read this manual carefully to ensure you understand all the information it contains and that the cover is safely installed, used and maintained. We cannot be held responsible in the event of damage resulting from failure to follow the instructions given in this manual.

INFORMATION.....	p. 4
INSTALLATION/USE	p. 6
CARE / MAINTENANCE.....	p. 22
SAFETY INSTRUCTIONS.....	p. 25
RECYCLING	p. 27

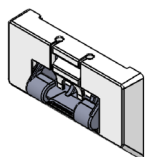
COMPONENTS

▶ SLATTED COVER



- The slatted cover is made of watertight and interconnected slats that float on the surface of the water.
- The space between the wall and the cover must be ≤ 70 mm.
- The slatted cover is connected to the tube with white straps attached to the first slat of the cover.
- Both ends of the slatted cover are equipped with straps to bind the cover together with the wall-mounted locking kits.

▶ LOCKING KITS



Pushlock



Straplock



Quicklock

- 3 types of fixing : surface mount / insert mount / hanging mount.
- The locking kits are positioned along the width of the pool (the number and position vary depending on the pool layout).
- These locking systems are operated with a tool or a two-step action



- **DEL covers installed on overflow pools can only be compliant with the French NF P 90-308 standard if the pool is equipped with an automatic device such as Vitalia INFINITY controller the water level by at least 2 cm when the cover is closed over the pool.**
- **Currently, DEL covers with a removable shape on a lateral set of steps do not comply with the NF P 90-308 standard.**
- **Except if the alarm manufacturer states otherwise, immersion pool alarms are not compatible with DEL automatic covers.**

INFORMATION

TOOLS



ASSEMBLY TIME



3 hours



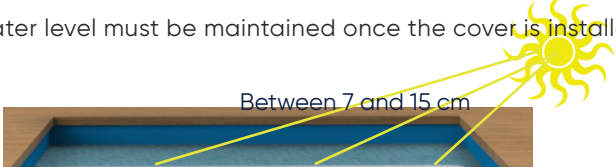


2 people

PACKING LIST

e.g. for a 4 x 8 m pool		
Slatted cover	4 parcels measuring 4.3 x 0.35 x 0.10 m	120 kg
Locking kits	1 parcel measuring 4.30 x 0.20 m	5 kg
Total weight		125 kg

INFORMATION

PREREQUISITES

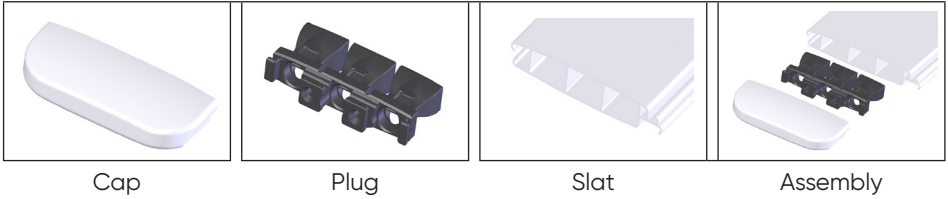
	<p>The water level must be maintained once the cover is installed.</p> 								
	<p>Fitting the bolts and holding them in place is a major factor in the safety of the cover, so they should only be attached to a solid surface, such as concrete dosed at 350Kg/m³, with or without paving. Never attach to coping stones.</p> <p>The concrete decking must be at least 10 cm thick.</p> <p>Any other support such as a lawn, duckboard or slab on the ground should be avoided.</p>								
	<p>The decking must be flat and level throughout. Decking area required : Decking = pool +0.8 m minimum</p> <table border="1" data-bbox="274 853 638 1053"> <thead> <tr> <th>example: Pool width 4m</th> <th>Decking length</th> </tr> </thead> <tbody> <tr> <td>PACKAGE A4</td> <td>8.60 m</td> </tr> <tr> <td>PACKAGE B4 + 1 extension C4</td> <td>9.60 m</td> </tr> <tr> <td>PACKAGE B4 + 2 extensions C4</td> <td>10.60 m</td> </tr> </tbody> </table> <p style="text-align: center;">POOL</p> <p style="text-align: right;">Decking length</p> <p>The cover must rest on the coping stones with clearance of at least 20 cm all-round the pool.</p> <p>The maximum width of the pool is 4.06m.</p>	example: Pool width 4m	Decking length	PACKAGE A4	8.60 m	PACKAGE B4 + 1 extension C4	9.60 m	PACKAGE B4 + 2 extensions C4	10.60 m
example: Pool width 4m	Decking length								
PACKAGE A4	8.60 m								
PACKAGE B4 + 1 extension C4	9.60 m								
PACKAGE B4 + 2 extensions C4	10.60 m								
	<p>The cover is not designed for infinity pools or above-ground pools.</p>								
	<p>Always wear safety equipment.</p>								
	<p>Practise using the ratchets (tightening and loosening) before fitting.</p>								



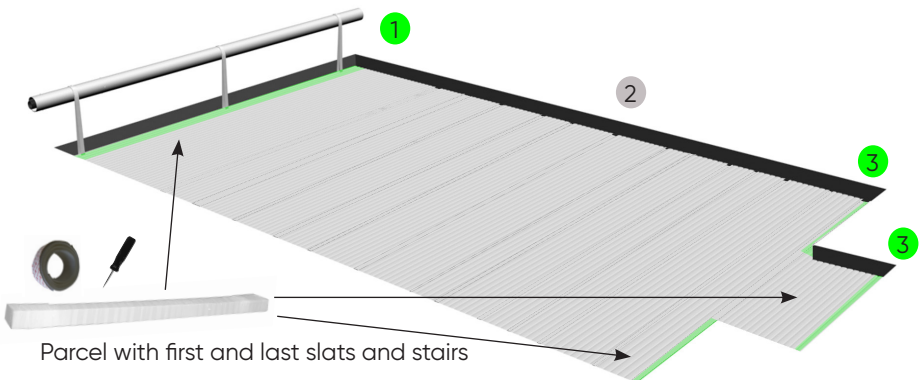
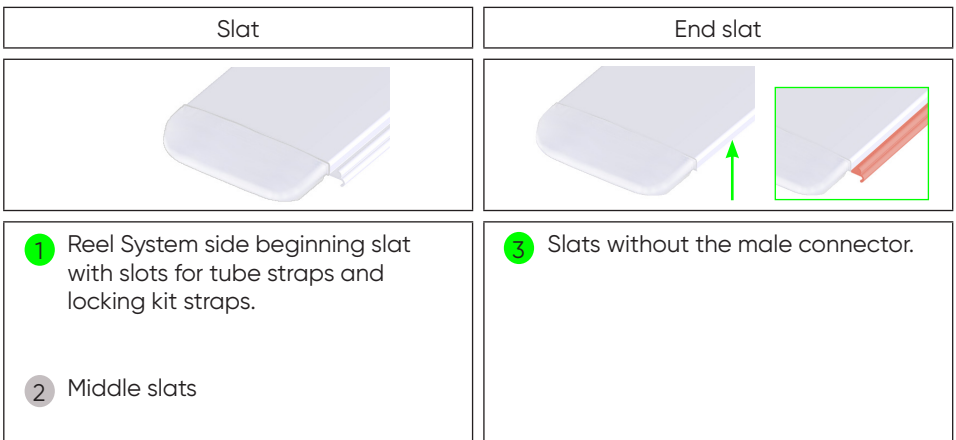
WE RECOMMEND READING ALL THE INSTALLATION STEPS BEFORE INSTALLING THE SYSTEM, TO AVOID UNNECESSARY HANDLING.

INSTALLATION

SLAT COMPOSITION



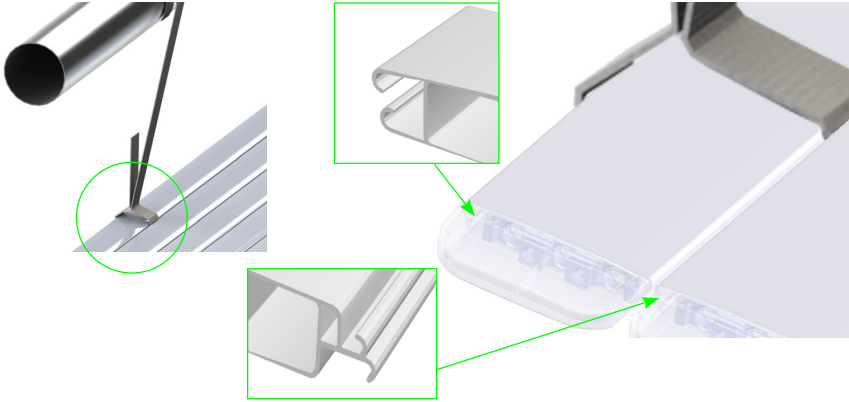
SLAT POSITIONING



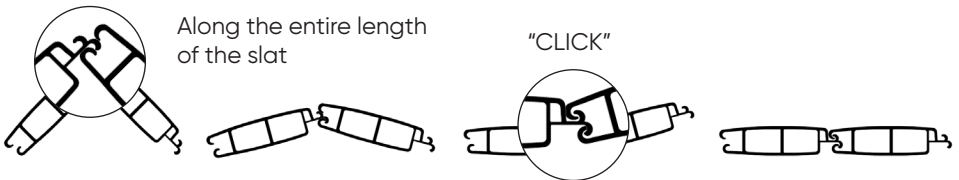
INSTALLATION

SLAT ASSEMBLY

▶ SLAT ORIENTATION

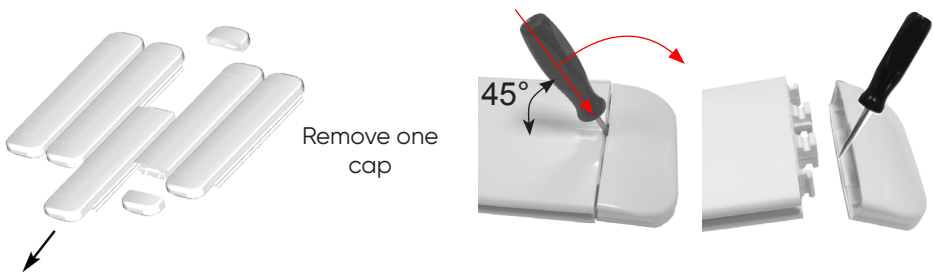


▶ COVER CONSTRUCTION – CLIPPING



Repeat until all slats are fully clipped together

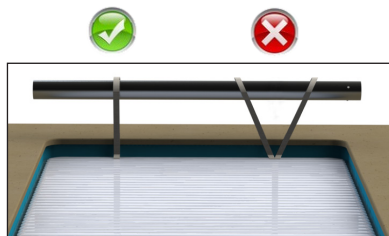
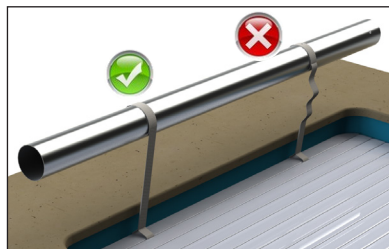
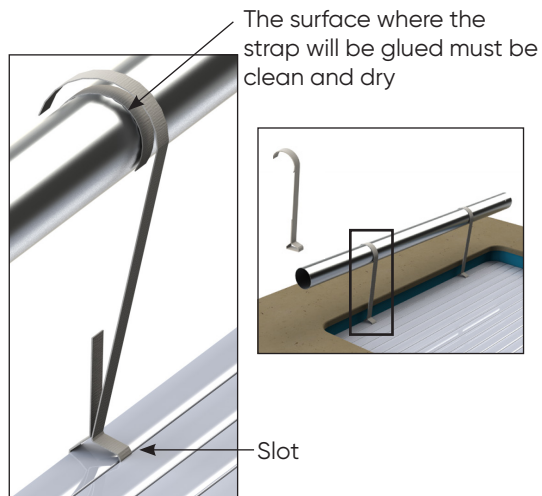
▶ COVER CONSTRUCTION – SLIDING



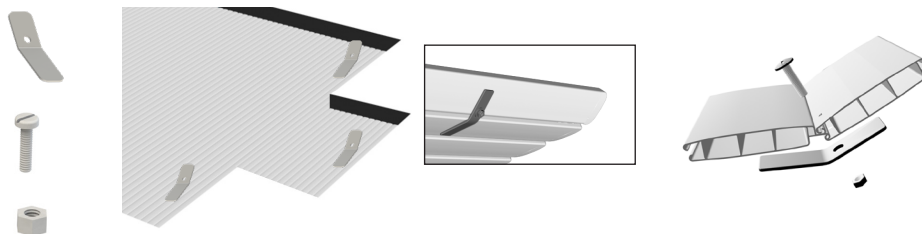
INSTALLATION

ABOVE-GROUND ROLLER

▶ STRAP INSTALLATION

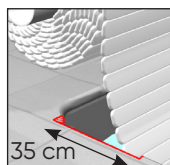


▶ SKI INSTALLATION



! Use a stainless steel screwdriver.

▶ ADDITIONAL INFORMATION

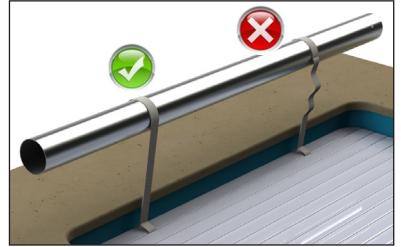
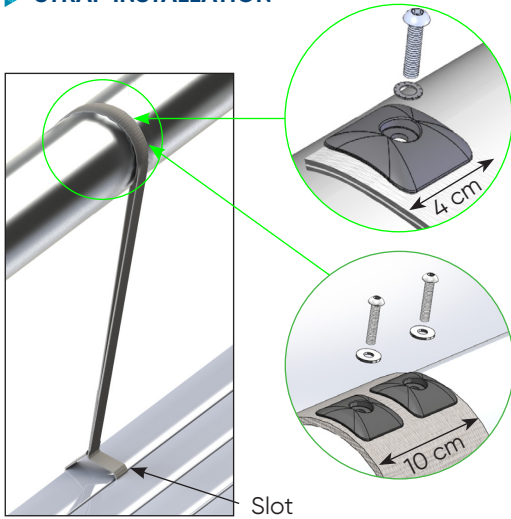


If necessary, use the grinder on the coping stones to facilitate the movement of the slatted cover and prevent abrasion.

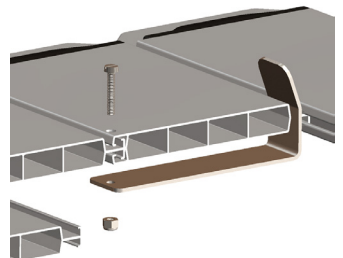
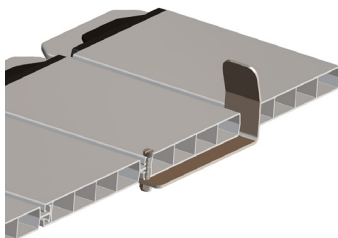
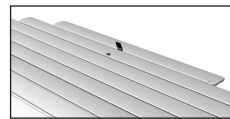
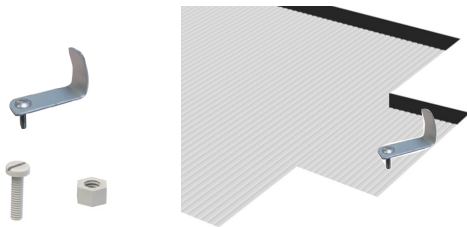
INSTALLATION

SUBMERGED ROLLER

▶ STRAP INSTALLATION

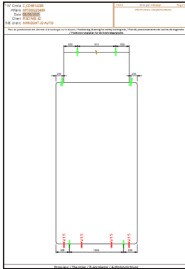


▶ CATCH HOOK INSTALLATION



INSTALLATION

LOCKING KITS



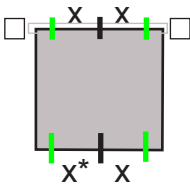
The positioning of locking kits in the pool is stated on the drawing delivered with the slats.

All modifications to the positioning of the kits must comply with the rules explained below.

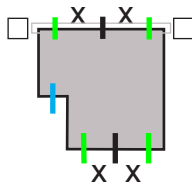
For all other cases, please contact us.

POSITIONING RULES

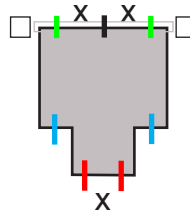
Without steps



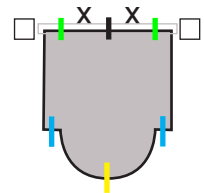
With side steps



With straight steps



with Roman staircase



- kit 50 cm max. from the edge
- 1 kit centred if < 1 m
1 kit 50 cm max. from the edge if < 2 m
2 kits if > 2 m
- 2 kits 50 cm max. from the edge
- 2 kits 50 cm max. from the edge



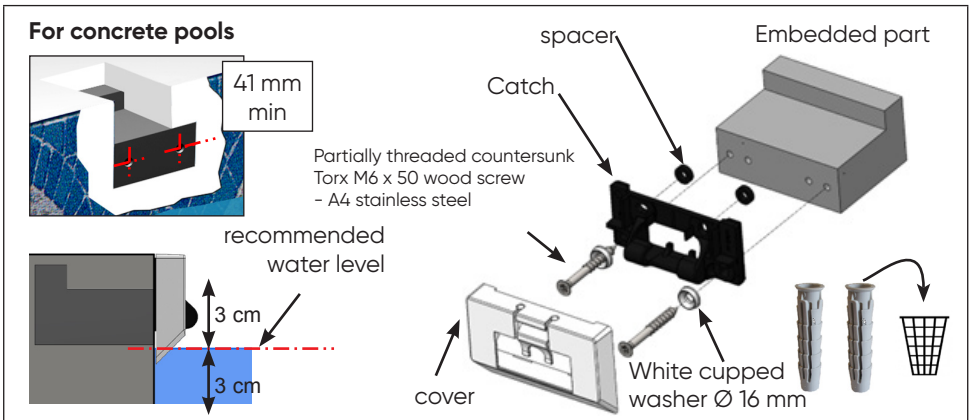
- **The distance between 2 locking kits cannot exceed 2m.**
- **The Quick-lock system is not suitable for use on curves and cut-aways, except at the end of Romanesque staircases.**
- **Replacing a standard Push Lock with an adjustable one = non-compliant.**
- **The straps must be adjusted as tightly as possible to limit the space between the wall and the slats.**

INSTALLATION

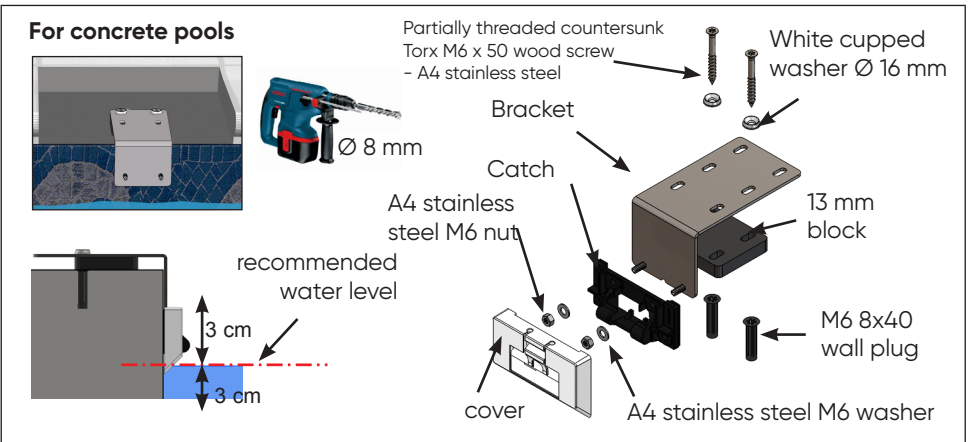
PUSHLOCK INSTALLATION

! A water level regulator is strongly recommended

▶ INSERT MOUNT VERSION



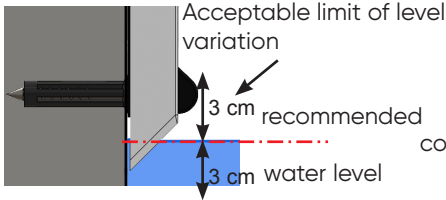
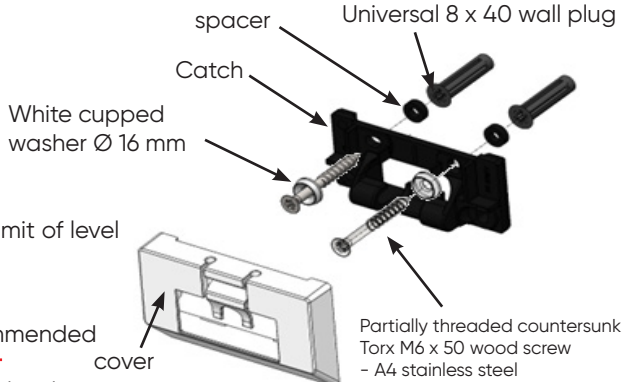
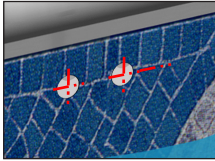
▶ HANGING MOUNT VERSION (AND HIGH WATER LEVEL)



INSTALLATION

▶ SURFACE MOUNT VERSION WITH COVER

For concrete and breeze block pools, as well as pools with a wall thickness greater than or equal to 8 mm

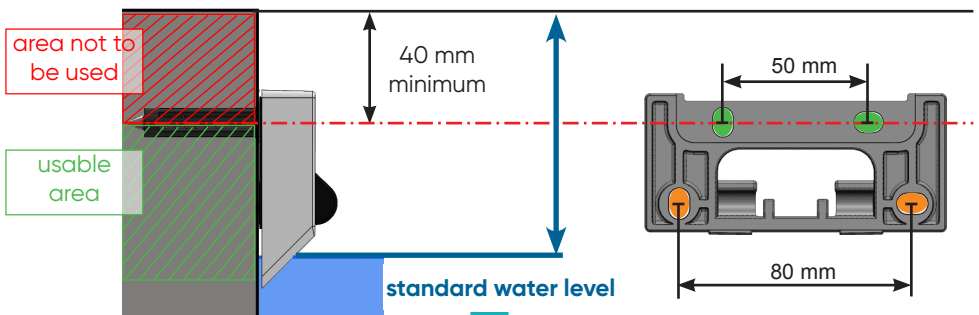
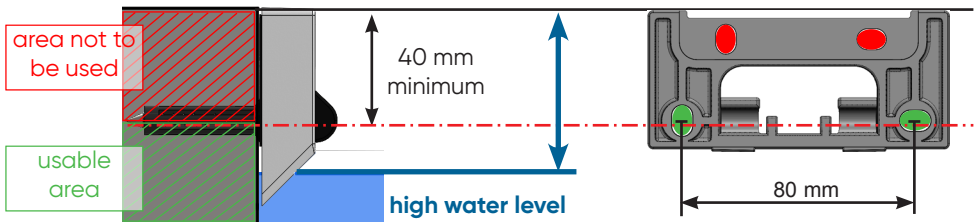


Position of push-lock according to desired water level

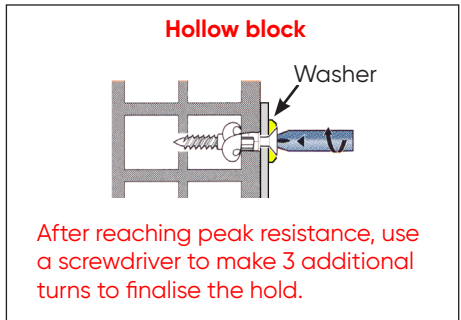
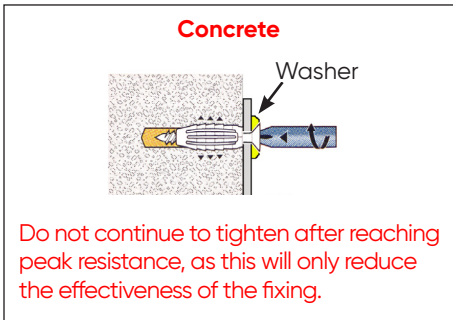
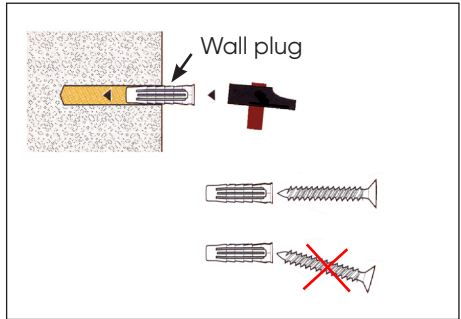
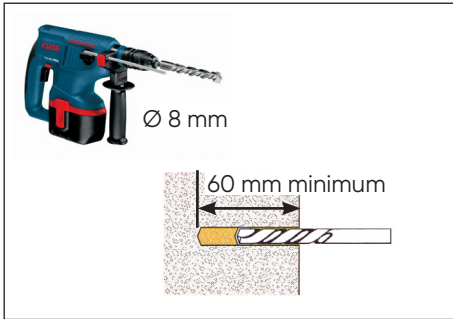
● do not use

● can be used

● to be used



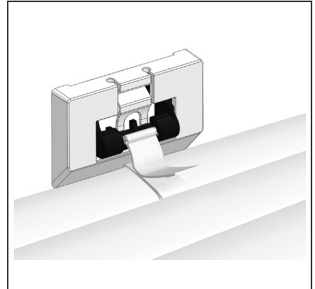
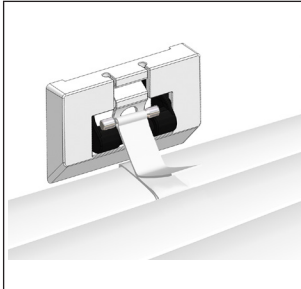
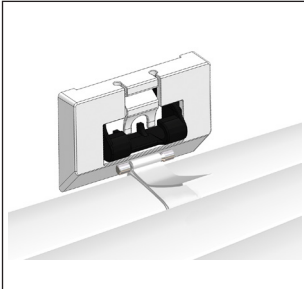
INSTALLATION



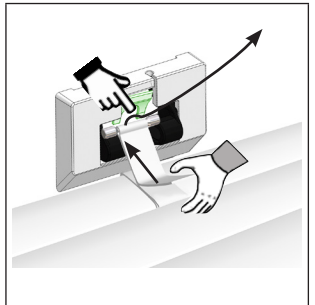
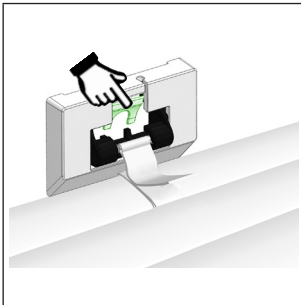
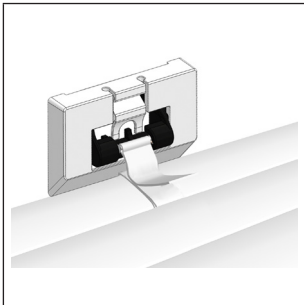
USE

PUSHLOCK LOCKING AND UNLOCKING

LOCKING



UNLOCKING

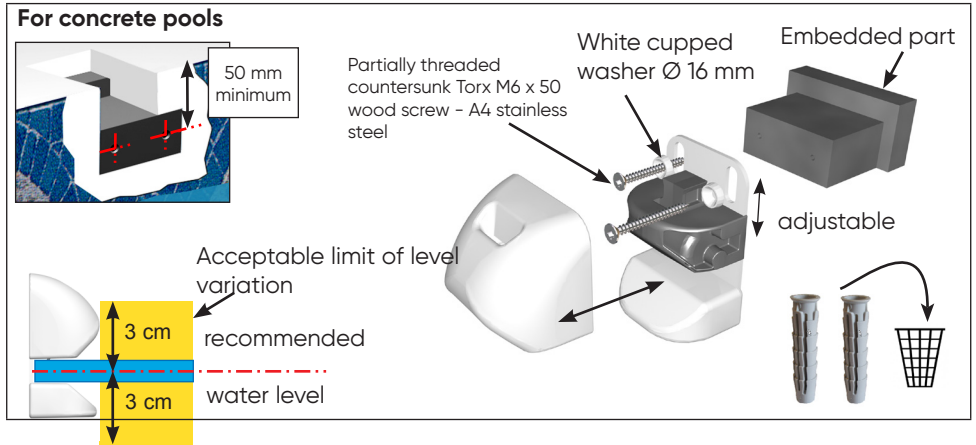


INSTALLATION

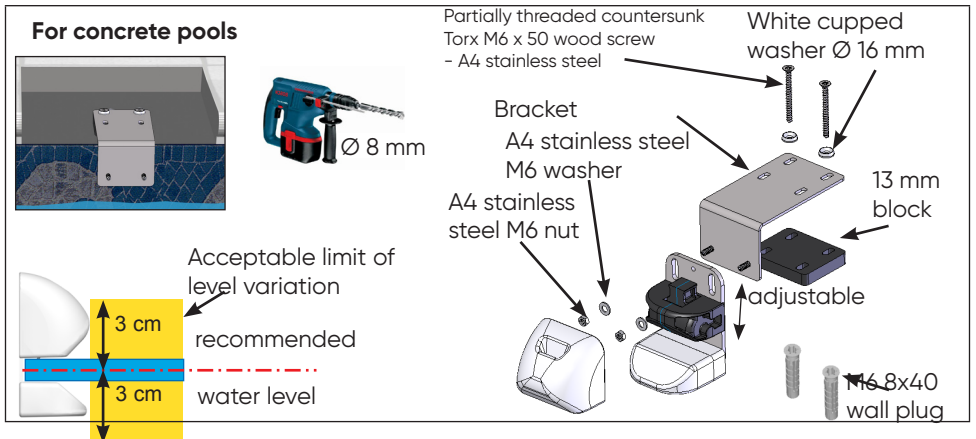
QUICKLOCK INSTALLATION

! A water level regulator is strongly recommended

▶ INSERT MOUNT VERSION



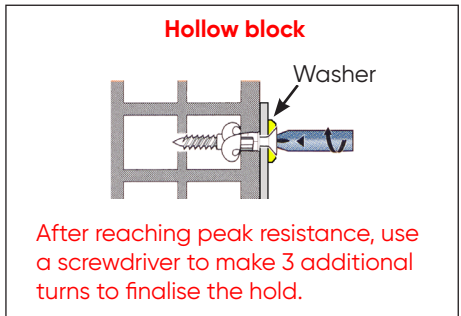
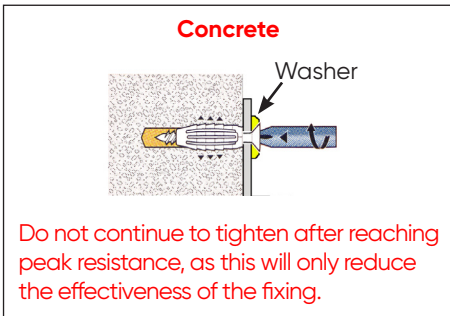
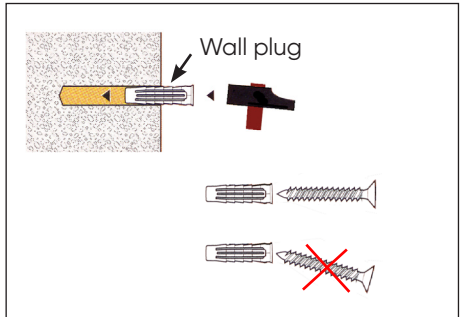
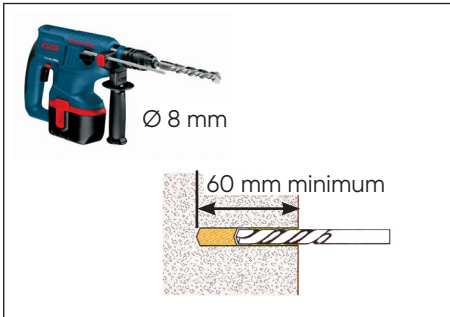
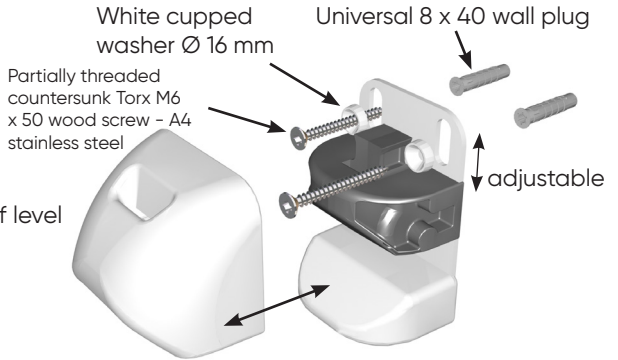
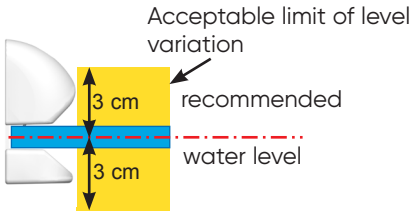
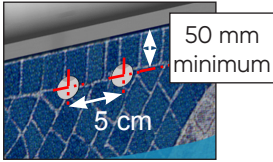
▶ HANGING MOUNT VERSION



INSTALLATION

▶ SURFACE MOUNT VERSION WITH COVER

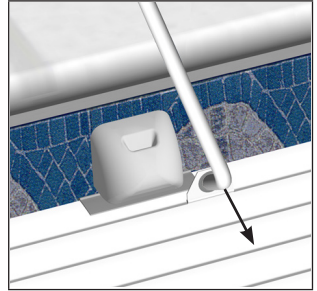
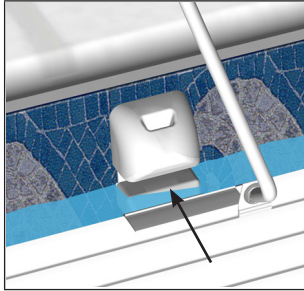
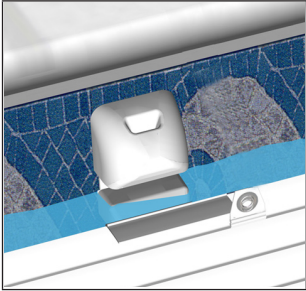
For concrete and breeze block pools, as well as pools with a wall thickness greater than or equal to 8 mm



USE

QUICKLOCK LOCKING AND UNLOCKING

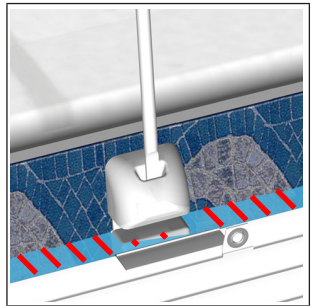
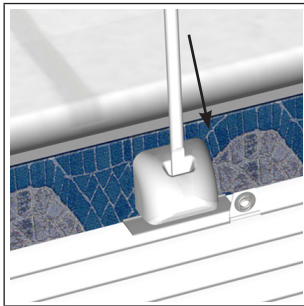
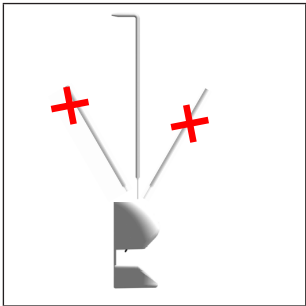
LOCKING



• Lock using the tool.

• Make sure the system is engaged

UNLOCKING



• Unlock using the tool.

• The slatted cover must not exit the quicklock before the key switch has been pressed.

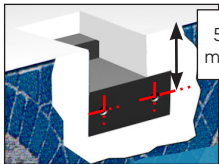
INSTALLATION

STRAPLOCK INSTALLATION

! A water level regulator is strongly recommended

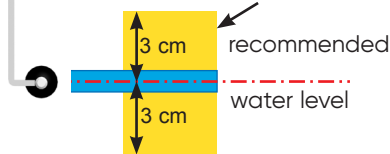
▶ INSERT MOUNT VERSION

For concrete pools



50 mm minimum

Acceptable limit of level variation



3 cm recommended

water level

White cupped washer \varnothing 16 mm

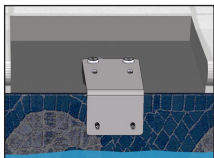
Partially threaded countersunk Torx M6 x 50 wood screw - A4 stainless steel

Embedded part



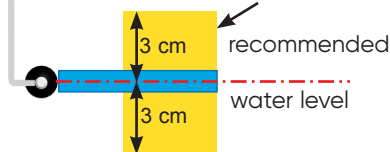
▶ HANGING MOUNT

For concrete pools



\varnothing 8 mm

Acceptable limit of level variation



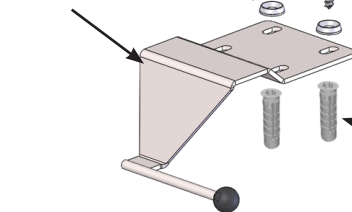
3 cm recommended

water level

Partially threaded countersunk Torx M6 x 50 wood screw - A4 stainless steel

White cupped washer \varnothing 16 mm

Bracket

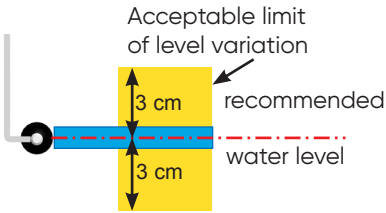
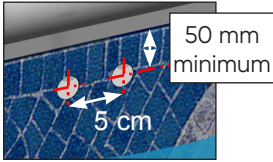


M6 8x40 wall plug

INSTALLATION

SURFACE MOUNT VERSION WITH COVER

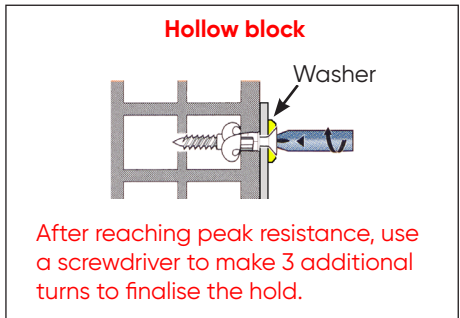
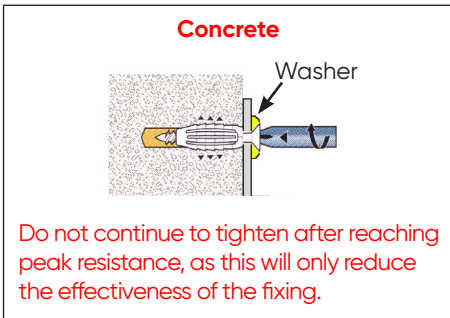
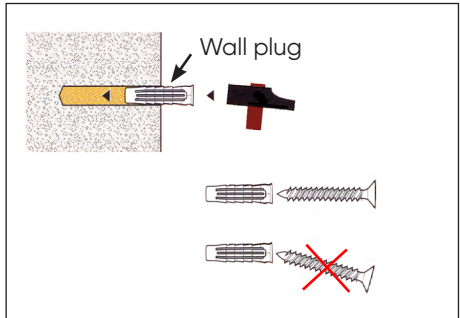
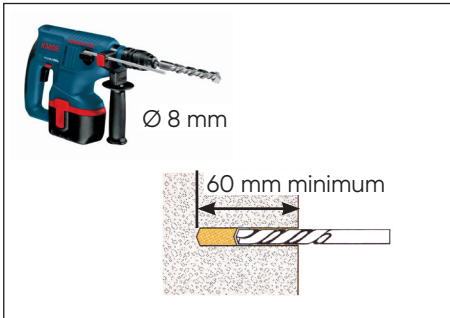
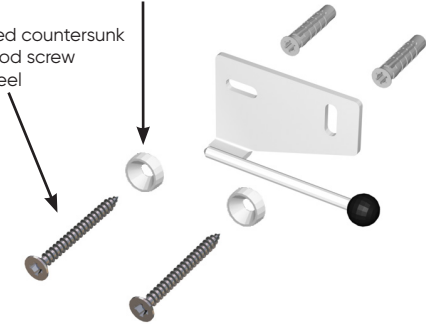
For concrete and breeze block pools, as well as pools with a wall thickness greater than or equal to 8 mm



White cupped washer \varnothing 16 mm

Universal 8 x 40 wall plug

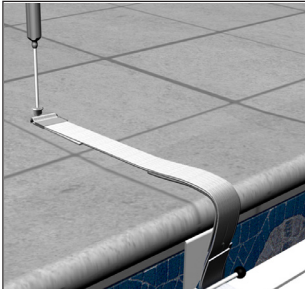
Partially threaded countersunk Torx M6 x 50 wood screw - A4 stainless steel



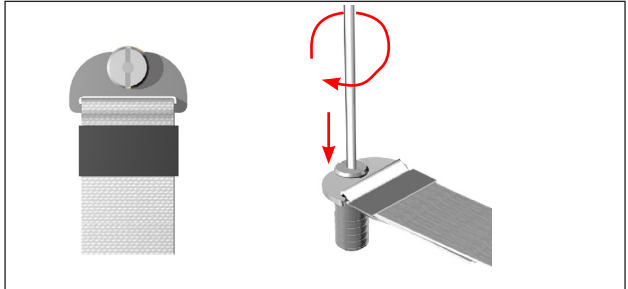
USE

STRAPLOCK LOCKING AND UNLOCKING

LOCKING

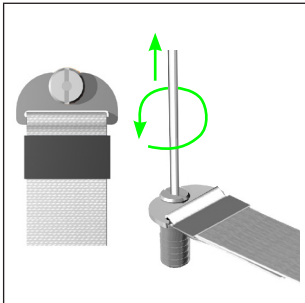


- Run the strap between the wall and the straplock rod

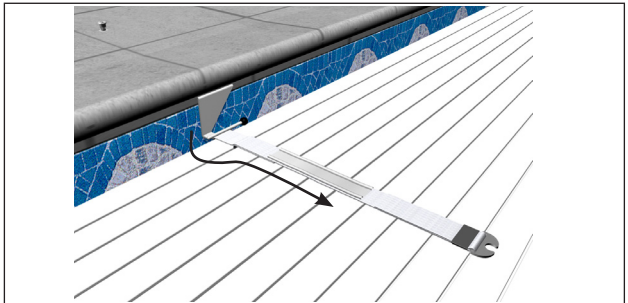


- Tighten the bolt
- The strap must be tight and the slatted cover must touch the top of the straplock

UNLOCKING



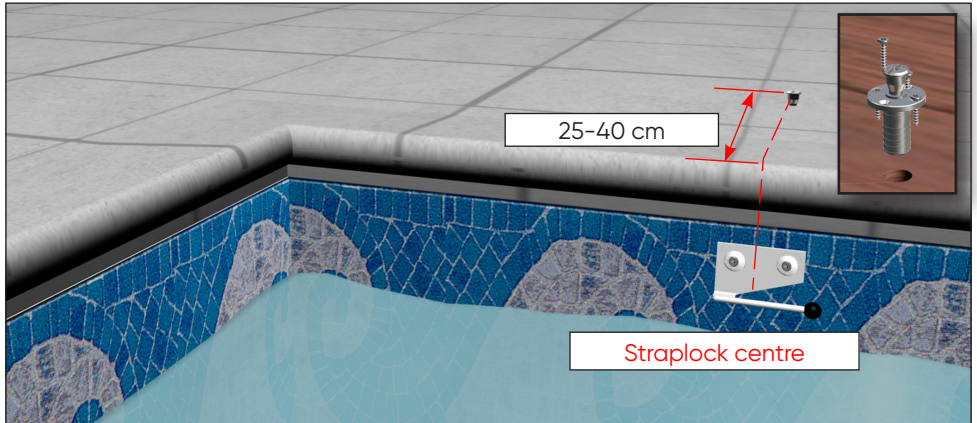
- Unscrew the bolt



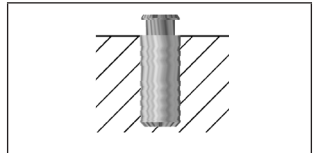
- Run the strap under the straplock and place it on the slatted cover

INSTALLATION

FASTENING BOLT



▶ BOLT FOR CONCRETE COPING



- Ø20
- Depth: 5 cm

- The head of the bolt must stand proud from the coping.

! Do not force the bolt into a smaller diameter hole

▶ BOLT FOR WOODEN COPING

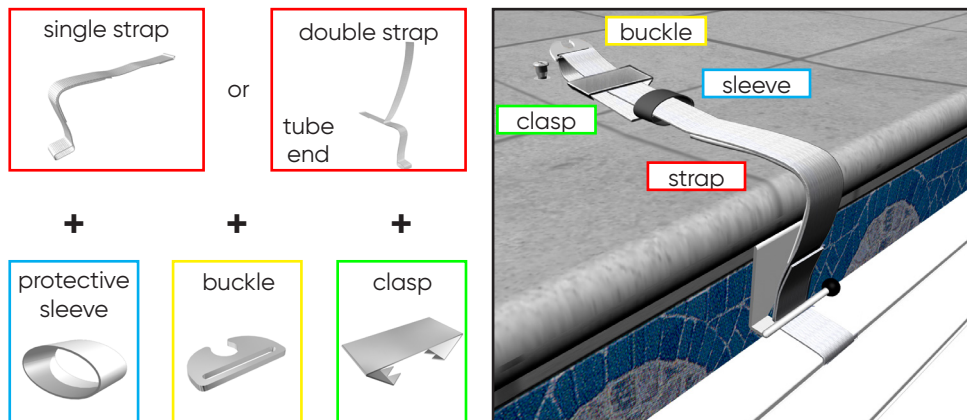


- Phillips screw Ø4 x 25

- Ø20
- Depth: 4.5 cm

INSTALLATION

ATTACHING THE STRAPLOCK STRAP TO THE FASTENING BOLT

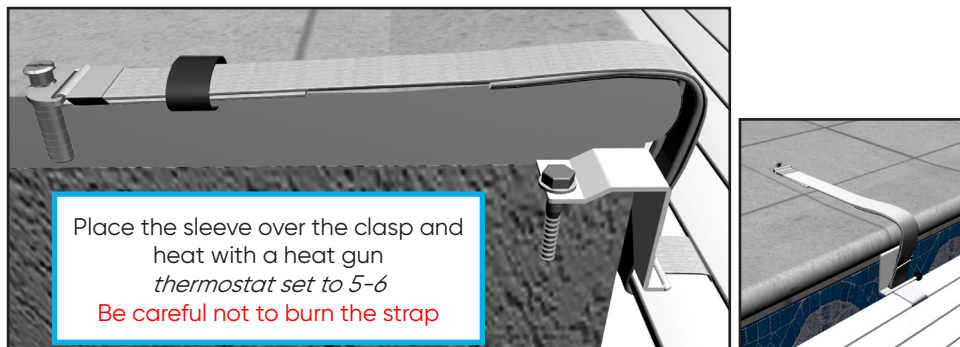


1

Tighten the strap
the slatted cover must touch the
bottom of the straplock

2

Position the clasp next to the buckle
and tighten
both layers of the doubled-over strap
are held in place with the clasp



OPENING/CLOSING THE POOL

**ALWAYS CHECK THAT THE POOL WATER LEVEL IS CONSTANT AND IN LINE WITH THE RECOMMENDATIONS SET OUT IN THIS MANUAL.
WHEN OPENING OR CLOSING THE COVER, YOU MUST ENSURE THAT THERE ARE NO SWIMMERS IN THE WATER AND ALWAYS KEEP AN EYE ON THE POOL.**

- It is essential that the slatted cover is always fully opened or closed. Never leave it halfway.
- When using an automatic cleaner under the cover, check that the hose does not interfere with the movement of the slats when opening and closing the cover.
- It is essential that floating objects are removed from the surface of the water when closing the cover.
- Do not obstruct the slatted cover during rolling or unrolling.
- Do not operate the slatted cover in case of frost.
- Opening and closing the pool requires a single person (the process takes 2 minutes), and locking or unlocking the locking kits takes around 3 minutes.
- Never leave an object on the cover (towel, rubber ring, etc.) because strong sunlight can cause the slats to expand locally and the warranty will no longer be valid.
- Never cover a slatted cover with a product not designed for this purpose as the slats may become misshapen.

CARE / MAINTENANCE

Any person working on the electrical parts must be qualified and must comply with the manufacturer's instructions and with the standards and regulations in force.



During any work, the technician must wear his PPE (personal protective equipment): gloves, glasses, mat, etc.

We recommend cutting off power to the installation before any work.

POOL WATER LEVEL

- For optimum safety and for the cover to work properly, always check that the pool water level remains constant and is in line with the manufacturer's recommendations (for better comfort, use an overflow and water level regulator).
- A level that is too high is the result of an overflow that is blocked by leaves or other objects.
- A level that is too low creates the risk of blockages.
- If the pool is built with a groove or a handrail, the water level must be controlled by a level regulator.

FILTRATION & WATER TREATMENT

- Schedule filtering during the hours the pool receives direct sunlight and have it running constantly when the water reaches 25°C.
- In order to guarantee the longevity of your installation, the pool water must be correctly treated according to the standards and recommendations in force (NF EN 16713-3)
- The pH, TH and TAC of the water should be checked and adjusted as often as necessary (however, care should be taken not to correct these 3 parameters independently of each other, but to do so using the Taylor table and balance the water according to the 3 parameters analysed).

CARE (responsibility of the customer)

- Clean your slatted cover thoroughly twice a year (when opening the pool for the season and when winterising it). This is even more important if your pool water is hard. To do this, use a descaling cleaner (see catalogue) and rinse with a water spray.
- Inspect the entire system if an abnormal load is placed on the cover (for example in the event of a fall).
- Inspect the straps annually.
- Do not wash IPE duckboard with a high pressure washer, we recommend washing them regularly with clean water and a non metallic brush.

WINTERISING

- Winterise the pool in a way that is adapted to its geographical location.
- Use the safety position to lock the cover.
- We recommend that you install an Ivern a winter shift or an Ivern a Plus protective covering to protect the slatted cover from UV rays and dirt.

MAINTENANCE

- All repairs must be carried out by a professional, who will contact the manufacturer if necessary.
- All spare parts must be original or comply with standards.
- Inspect the entire slatted cover.
- At the start of the season and in the event of an incident (a person falling, hail on the cover, abnormal force on the cover, etc.), it is essential to check that the slats do not show any visible damage that could compromise the cover's safety function (slats with cracks, holes, distortion, etc.). Replace the slats or the entire cover if necessary.
- In both summer and winter, do not place an opaque cover on top of the slatted cover.

This risks damaging the slats due to increased temperatures.

SAFETY INSTRUCTIONS

Dear customers,

Thank you for the confidence you have placed in us by selecting our product.

Please read the below recommendations carefully.

WARNING

Swimming pools can be extremely dangerous for children. Drowning can occur very quickly.

Children near a pool require constant vigilance and attention, even if they can swim.

Learn lifesaving techniques.

Having a responsible adult physically present is essential whenever the pool is open.



Memorise the numbers for the emergency services and display them near the pool.



SAFETY ADVICE

- This section is by no means a replacement for common sense or individual responsibility. Its aim is not to replace the vigilance of parents and/or responsible adults, who remain the essential factor in ensuring the protection of young children.
- **Warning:** safety is only guaranteed when the cover is closed, locked and correctly installed in compliance with the manufacturer's instructions.
- The cover must systematically be closed if you are absent from home, even for a very short period.
- Check that no persons and no foreign objects are in the pool before and during opening and closing operations.
- Store the devices and/or tools needed to operate the covers out of the reach of children.
- Operation of the mechanism must only be carried out by a responsible adult.
- With the exception of movable floors, movable terraces and the covering elements provided for this purpose (e.g. gratings), do not climb, walk or jump on a safety cover.
- Take all necessary measures to prevent access to the pool for young children until the cover is repaired or when a malfunction is observed that prevents closing or in case of temporary unavailability of the equipment or the pool.
- Respect the water levels designated by the manufacturer.

A child can drown in less than 3 minutes, no type of protection can ever replace the watchful eye and vigilance of a responsible adult.

RECYCLING

PACKAGING



Dispose of the packaging in line with current rules and regulations.

END OF LIFE



- Do not throw away your discarded equipment or used batteries with unsorted household waste.
- It is your responsibility to dispose of all your waste, particularly electrical and electronic equipment, by taking it to a dedicated collection point for recycling.
- Certain products potentially contain substances that are hazardous to the environment, and these will be removed or neutralised.
- Find out about existing take-back and collection systems.



discard the manual in line with the current regulations.

RECYCLING

PACKAGING

Dispose of the packaging in line with current rules and regulations.

END OF LIFE

- Do not throw away your discarded equipment or used batteries with unsorted household waste.
- It is your responsibility to dispose of all your waste, particularly electrical and electronic equipment, by taking it to a dedicated collection point for recycling.
- Certain products potentially contain substances that are hazardous to the environment, and these will be removed or neutralised.
- Find out about existing take-back and collection systems.

discard the manual in line with the current regulations.

RECYCLING

PACKAGING

Dispose of the packaging in line with current rules and regulations.

END OF LIFE

- Do not throw away your discarded equipment or used batteries with unsorted household waste.
- It is your responsibility to dispose of all your waste, particularly electrical and electronic equipment, by taking it to a dedicated collection point for recycling.
- Certain products potentially contain substances that are hazardous to the environment, and these will be removed or neutralised.
- Find out about existing take-back and collection systems.

discard the manual in line with the current regulations.

RECYCLING

PACKAGING

Dispose of the packaging in line with current rules and regulations.

END OF LIFE

- Do not throw away your discarded equipment or used batteries with unsorted household waste.
- It is your responsibility to dispose of all your waste, particularly electrical and electronic equipment, by taking it to a dedicated collection point for recycling.
- Certain products potentially contain substances that are hazardous to the environment, and these will be removed or neutralised.
- Find out about existing take-back and collection systems.

discard the manual in line with the current regulations.

DEL SAS
ZA LA BASSE CROIX ROUGE
35530 BRÉCÉ - FRANCE

☎ +33 (0)2 99 00 17 72

STAMP

a brand by

